

# LRI Emergency Department Nurse-Led Discharge for Children with Minor Head Injuries

## Patient Details

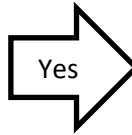
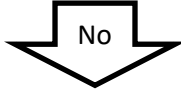
Full Name:

DoB:

Unit number:

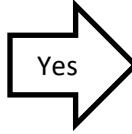
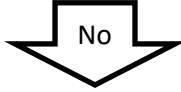
(Use sticker if available)

Child under one year with a head injury



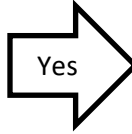
Not suitable for nurse-led discharge

GCS<15, POPS>1  
Abnormal behaviour, appears unwell,



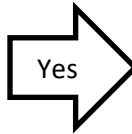
Not suitable for nurse-led discharge

Any concerning features from history (see box 1)



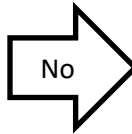
Not suitable for nurse-led discharge

Any concerning features on examination (see box 2)



Not suitable for nurse-led discharge

Any lacerations requiring wound closure



Suitable for nurse-led discharge (if **all** criteria in box 3 are met)

Complete head injury discharge checklist and give head injury advice leaflet. Task on NerveCentre and move to injuries for wound closure.

## Box 1: History

- Re attendance
- Referral from GP
- Safeguarding concerns
- Suspicion of NAI
- Concerning mechanism of injury
- Blood clotting disorders
- Use of drugs or alcohol
- Potential loss of consciousness, seizure or amnesia
- Vomiting

## Box 2: Examination

- Abnormal neurology
- Suspected skull fracture
- Boggy swelling
- Any other injuries requiring review
- Wound greater than 5cm
- Complicated wound closure
- Suspected foreign body

## Box 3: Conditions for nurse-led discharge:

- Child aged 1-18
- Nurse triage trained
- No parental/staff concern
- No evidence of other injuries
- Child given analgesia (if required)
- Verbal advice and head injury information leaflet given
- Safeguarding checklist completed
- Actions documented on NerveCentre
- Discharge letter completed
- Parents happy with discharge from triage

Child Assessed/Discharged by:

Signed:

Date:

Time:

## Wound Closure

**Are any of the following features present?**

- . Located on face or ears (excluding forehead)
- . Actively bleeding
- . Skin loss (any degree)
- . Non-opposing edges / edges under tension
- . Underlying structures can be visualised
- . Suspected retained foreign body
- . Any contamination
- . Features that do not correlate with the reported mechanism
- . Secondary to deliberate self-harm
- . Secondary to underlying medical conditions (e.g. seizure)



**Yes**

Child needs  
clinician  
assessment



**No**

Close wound with tissue  
adhesive and/or Steristrips  
as required following  
appropriate cleaning.

Discharge the patient with  
appropriate verbal and  
written wound care advice.

**IF YOU ARE NOT HAPPY, AT ANY POINT, WHILST CLEANING OR CLOSING THE WOUND,  
PLEASE REFER THE PATIENT BACK TO BE ASSESSED BY A CLINICIAN.**

Wound closed by:

Signed:

Date:

Time: